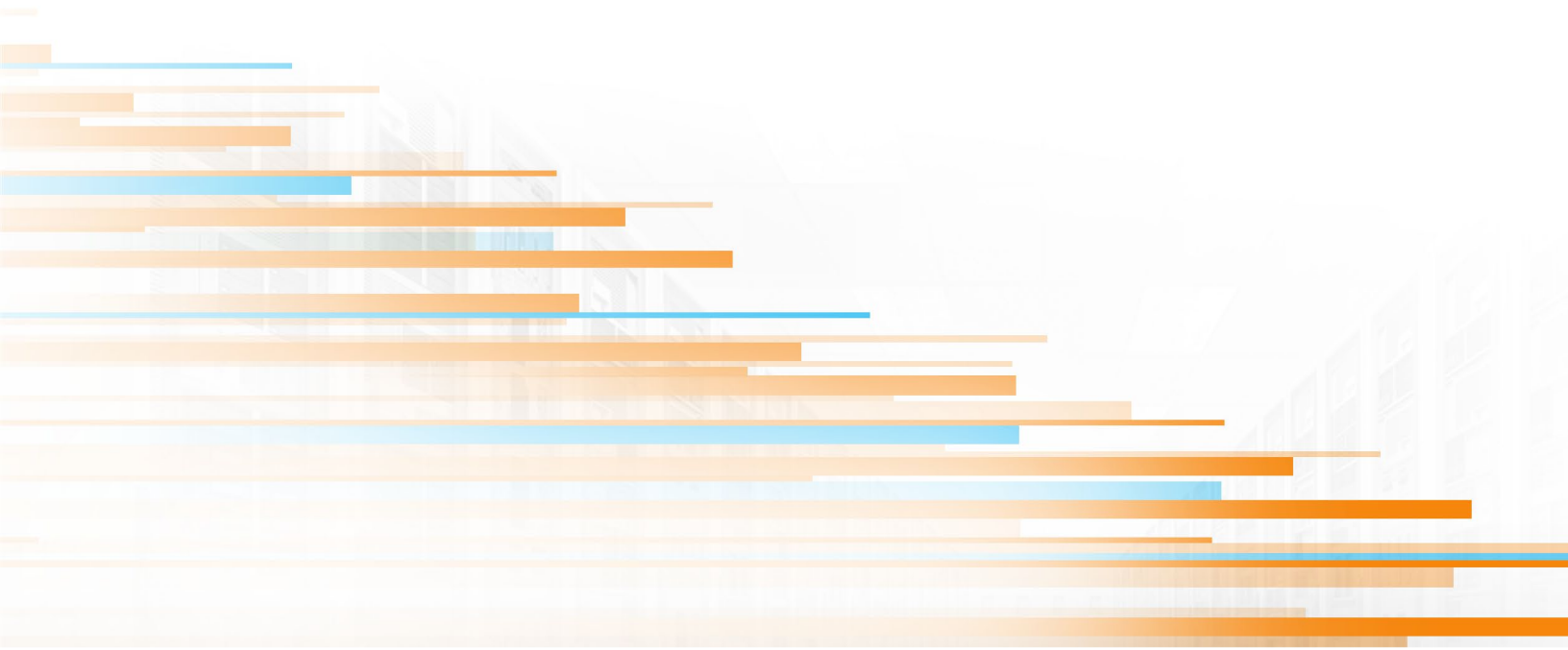




Gigamon®

The Smart Route To Visibility™



GigaVUE® H Series

High-density, High-scale Traffic Visibility Fabric™ Nodes

The Traffic Visibility Fabric

Overcoming the Limitations of Network Traffic Monitoring and Management

A variety of systems are deployed throughout Enterprise and Service Provider infrastructure to provide visibility of the traffic traversing production networks. These systems are only as effective as the traffic and communications that they can see; limit visibility to the traffic, and the value of the monitoring, management or security system is equally limited. IT Managers therefore attempt to connect the systems at the most appropriate location within the environment, although the definition of “*most appropriate*” changes frequently due to the dynamic nature of the network and the systems that connect to that network.

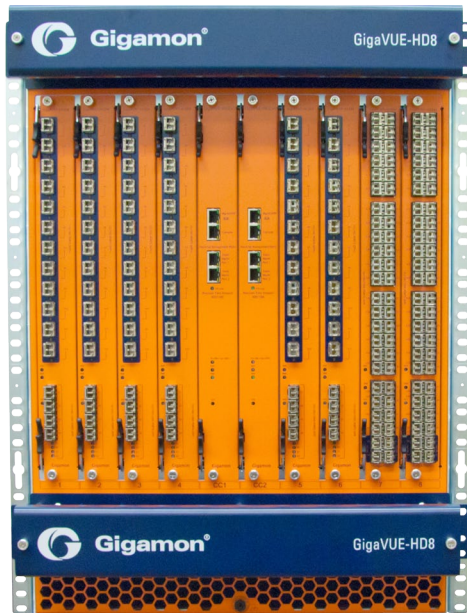
As requirements on networking and infrastructure continued to demand more flexible, scalable and versatile solutions, Gigamon pioneered a new approach to deliver pervasive and extensible visibility into the network. Understanding the criticality and priority of one communication flow over another, one application over another, and one packet over another, created the foundation for the development of the Traffic Visibility Fabric. The Gigamon Visibility Fabric is a truly pervasive framework, able to see across the boundary of physical and virtual, and therefore able to see into the cloud and provide the clarity that is essential to secure maintain, and support network-based services and applications.

GigaVUE H Series Chassis

Modular-based Intelligent Traffic Visibility Fabric Nodes

GigaVUE-HD8

Effective network monitoring, management and security begins with visibility to the traffic traversing the network at 1Gb, 10Gb, 40Gb and beyond. As users demand more bandwidth, pervasive access and mobile reach, network managers are being driven to deploy higher-speed backbones and networks.

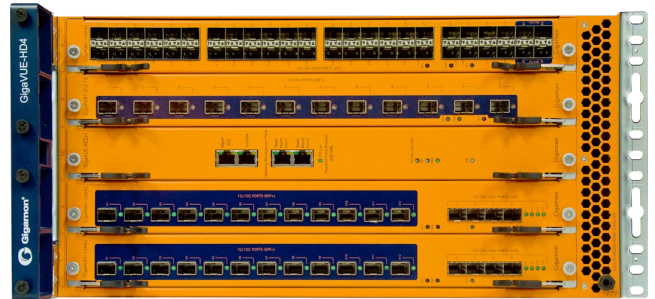


The GigaVUE-HD8 chassis provides the initial building block for a high-density, high performance and intelligent Traffic Visibility Fabric Node. Each node is able to deliver all the functions and intelligence of the fabric, or a set of nodes can be combined to build a broader and more pervasive Visibility Fabric. The fabric is able to replicate, filter and selectively forward network traffic to monitoring, management and security tools.

Featuring a revolutionary terabit backplane, the GigaVUE-HD8 can accommodate 1Gb, 10Gb and 40Gb network and tool connections, while offering the ability to keep pace with future industry trends. The 14RU rack-mountable chassis has front-to-back cooling and Telco-grade hot-pluggable line cards and power supplies.

GigaVUE-HD4

At 10Gb or higher speeds, properly securing and monitoring infrastructure begins with visibility to traffic traversing the network. Gigamon has taken these factors into consideration as organizations begin to demand more bandwidth and faster operating speeds in space restrictive environments.



GigaVUE-HD4 Traffic Visibility Fabric Node delivers the performance and capabilities of the larger GigaVUE-HD8 except in a high-density 5RU rack-mountable, four-slot chassis that was purpose built for data center environments. The GigaVUE-HD4 chassis is compatible with all H Series line cards and the GigaVUE-HD8 management and control card.

GigaPORT H Series Line Cards

Purpose-built Industry Leading Traffic Visibility Blades



GigaPORT-X04G44

The GigaPORT-X04G44 features four 1/10Gb SFP/SFP+ ports, and forty-four 10/100/1000Mb SFP ports on a single line card. The GigaPORT-X04G44 supports up to 2,000 individual filter rules per card.

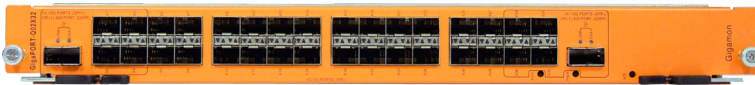
GigaPORT-X12G04

The GigaPORT-X12G04 features twelve 1/10Gb SFP/SFP+ ports and four 10/100/1000Mb SFP ports. As with all other line cards for the H Series, the card is hot swappable in the GigaVUE® H Series chassis and each port has the ability to serve as a network ingress, a tool egress or an inter-node clustering port.



GigaPORT-Q02X32

The GigaPORT-Q02X32 features two 40Gb QSFP+ ports and thirty-two 1/10Gb SFP/SFP+ ports offering a full 320Gb of connectivity on a single line card. The 40Gb ports (as with the 10Gb ports) are standards-based and configurable for network, tool or clustering functionality.



GigaPORT-X12-TS

The GigaPORT-X12-TS features twelve ports of 10Gb SFP+ connectivity with the ability to enable line-rate time stamping of all ingress packets with nanosecond accuracy. The clock is derived from a PTPv2 source and enables highly accurate latency and time analysis of traffic traversing production networks.



The GigaPORT H Series modular line cards deliver the ability to aggregate, replicate, filter and forward inbound traffic based upon user defined and highly flexible rules. The resultant traffic is then forwarded to network monitoring, management or security tools enabling efficient, versatile and scalable management of infrastructure.

GigaPORT H Series line cards enable high-speed and high density networks to converge traffic in a few consolidated and concentrated tools. As network performance scales from 1Gb to 10Gb and then 10Gb to 40Gb, the GigaPORT H Series is able to ensure that lower-performance or bandwidth-constrained tools are able to focus on the critical and important communications.

Any port can have any function on the GigaPORT line card, so each port can be uniquely configured as a network uplink, a tool or monitoring system connection, or an inter-node cluster that can enable multiple GigaVUE H Series chassis to combine and create a single fabric.

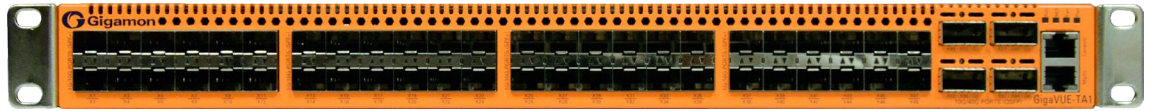
GigaVUE-TA1

“Gateway to Visibility” Traffic Aggregation Node

GigaVUE-TA1

With many 10Gb connections in Enterprise networks averaging less than 5% utilization, the GigaVUE-TA1 Traffic Aggregation Node was designed to aggregate

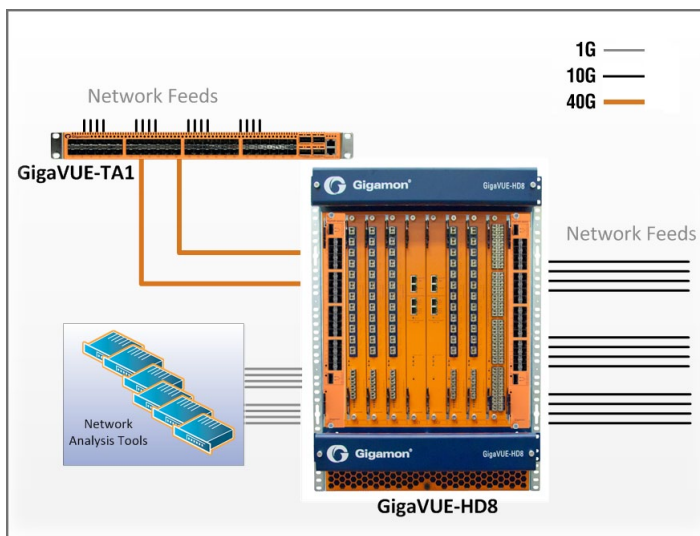
traffic from many low utilized connections into higher utilization “Gateway” Visibility Fabric uplinks. The aggregated traffic “Gateway” connections are then fed into either a GigaVUE G or H Series product where sophisticated Flow Mapping® filters create the powerful Visibility Fabric.



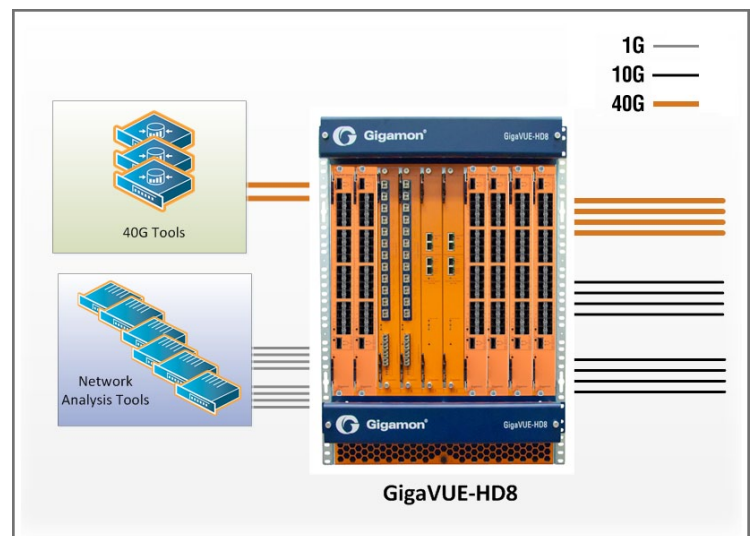
The GigaVUE-TA1 has a low profile 1RU design and is purpose built for the top of rack or end of row in data centers, or in high-density and low utilization Service Provider infrastructure. The system ships with twenty-four 1/10Gb SFP/SFP+ ports as standard, and through a field upgrade can be optionally extended by a further twenty-four ports of 1/10Gb SFP/SFP+ and four 40Gb QSFP+ ports. The system has hot-swappable, dual fan trays and a single power supply. A second power supply can be added to provide redundant power. AC and DC power options are available.

The H Series Solution

Monitoring and Management of 1Gb, 10Gb, 40Gb and Beyond



Multiple Low Utilized 10Gb Stream Aggregation

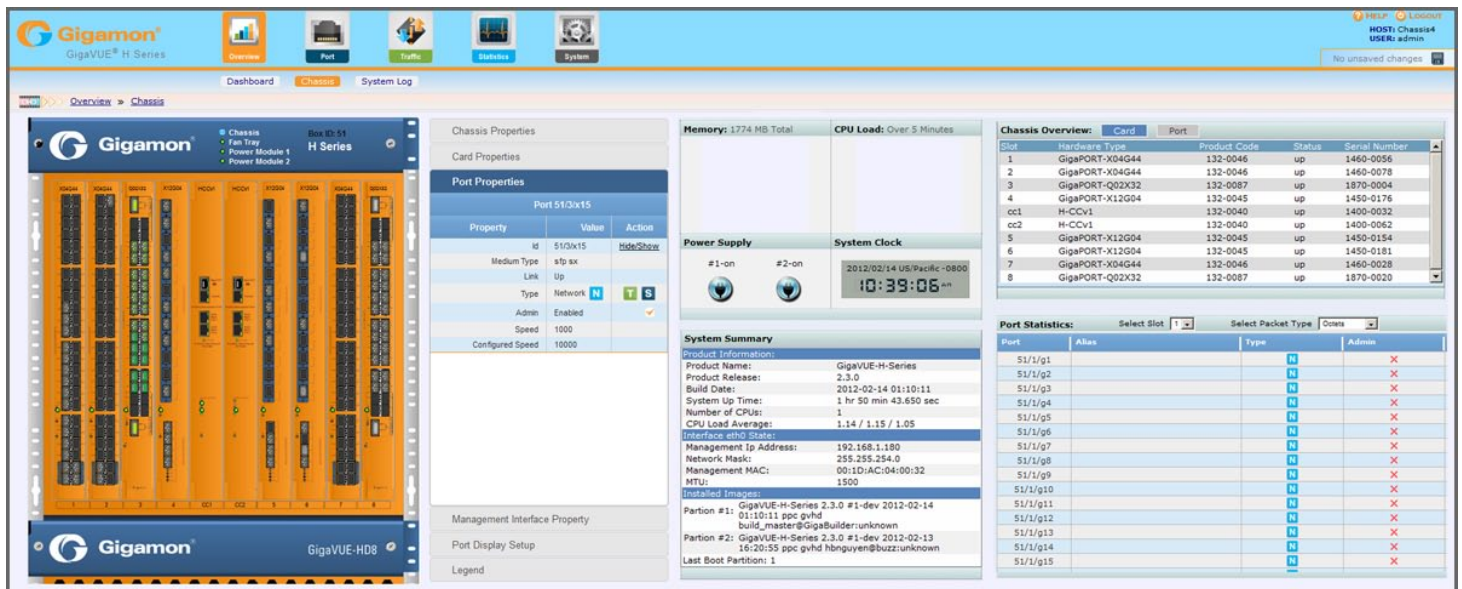


Multiple 1Gb and 10Gb connecting to 40Gb



H-VUE Management Platform

Point. Click. Configure.



H-VUE Web Browser System Navigator

The H Series web-based Graphical User Interface (GUI) provides network architects, engineers and operators with an intuitive, browser-based interface for configuring your GigaVUE Traffic Visibility Fabric nodes and filters. Using the most popular browsers, you can securely access the fabric nodes and quickly make changes on the fly without the need to download and install client software. The H-VUE interface supports SSL encryption for secure access.

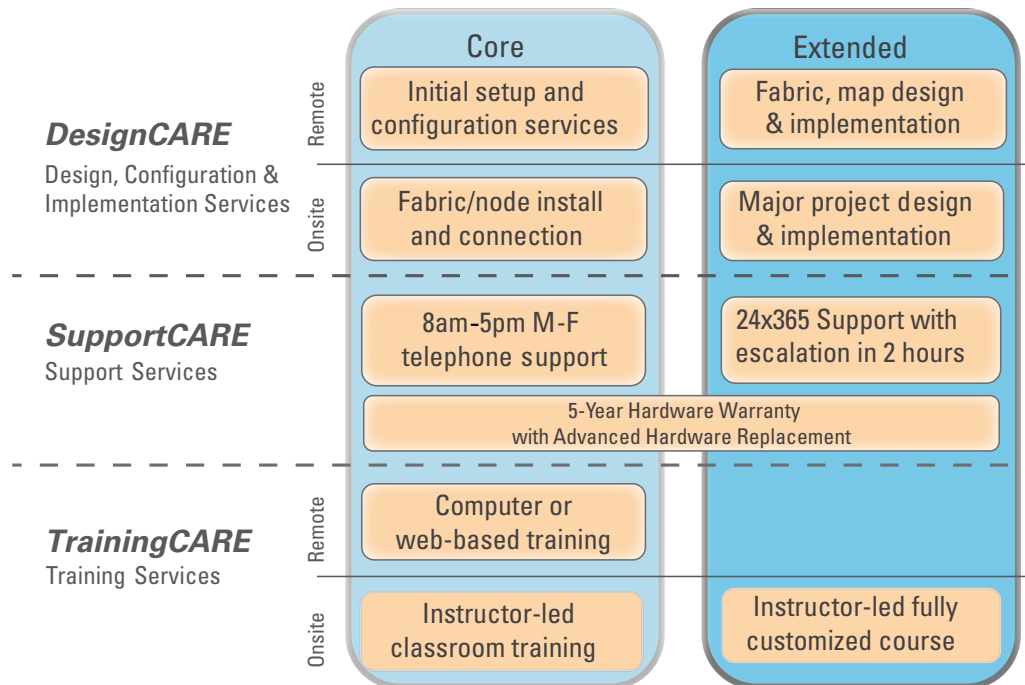
Configuring the packet distribution is one example of the power, flexibility and efficiency of the H-VUE GUI. The packet distribution is where decisions are made regarding how traffic ingressing the fabric on network ports should be “mapped” to the fabric egress ports, called tool ports. Using the intuitive user interface, maps can be built to forward traffic, using criteria upon which the traffic should be replicated, timestamped or just forwarded at line rate. Packet distribution is managed from the connection window where you can perform aggregation, filtering and replication to maximize the efficiency of your security and monitoring tools. Create connections, maps and pass alls by clicking one port selection handle and dragging it from any network port to any tool port.

- **Filter Setup:** In the connection window, each port is listed with its own entry; users can change icons, port aliases, types and filters as desired. Connections, maps, and pass alls are easily rendered by dragging lines between network elements.
- **Flow Mapping:** The Flow Mapping® window enables complex configuration of Layer 2, 3 and 4 traffic filters and maps. With maps being listed in individual containers, administrators can select different elements to easily change mapping or to add new rules.

The H-VUE GUI supports TACACS+ and RADIUS authentication servers.

GigaCARE

A Complete Program of Solutions to Design, Deploy and Support a Visibility Fabric



Gigamon provides world-class design, education and support services to enable our customers to maximize the value of their investment in our Traffic Visibility Fabric solutions. Our support programs have been developed to ensure that we exceed your expectations by placing the 'customer first' in all we do, and by demonstrating the value, agility and flexibility of our technology, solutions and our organization.

Our GigaCARE™ program provides many benefits, including:

- Design, installation and deployment services to assist, support or lead the creation of a Visibility Fabric across one or many locations.
- Access to experienced technical professionals that can address product, solution and fabric related questions.
- Advanced hardware replacement so that equipment is dispatched in advance of return, minimizing any downtime or operational impact.
- Notification of, and access to the latest software updates for your Visibility Fabric.
- Awareness and understanding of new developments in our hardware and software portfolios.
- Training services to maximize the return on your investment in the Gigamon Visibility Fabric and our GigaVUE range of products.

All Gigamon hardware ships with a 5-year Hardware Warranty as we know you need high quality and high reliability in all aspects of your infrastructure. We also know that our hardware delivers world-class reliability.

About Gigamon

Gigamon provides intelligent Traffic Visibility Networking solutions for enterprises, data centers and service providers around the globe. Our technology empowers infrastructure architects, managers and operators with unmatched visibility into the traffic traversing both physical and virtual networks without affecting the performance or stability of the production environment. Through patented technologies, the Gigamon GigaVUE portfolio of high availability and high density products intelligently delivers the appropriate network traffic to security, monitoring or management systems. With over seven years experience designing and building intelligent traffic visibility products in the US, Gigamon serves the vertical market leaders of the Fortune 1000 and has an install base spanning 40 countries.

Gigamon® | 598 Gibraltar Drive Milpitas, CA 95035 | PH 408.263.2022 | www.gigamon.com